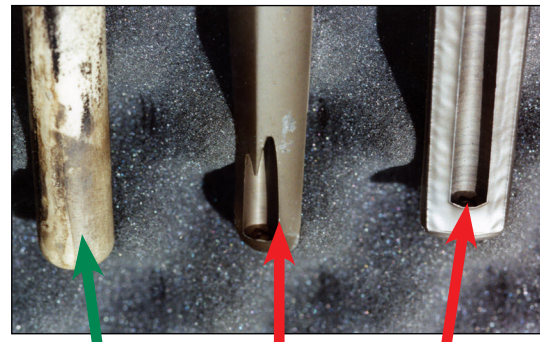


# COAL PULVERIZING THERMOWELL

This well is ideal for coal pulverizers, fluidized beds and any place where contact instrumentation might be subjected to Small Particle Erosion (SPE). JMS found that in many SPE applications customers were using OEM supplied hard faced thermowells with a variety of coatings. These thermowells were expensive to replace and could not withstand the harsh erosive environment of pulverized coal. The wear to these OEM supplied wells resulted in loss of reliability, change in response time and significant energy costs.

In response to these concerns, JMS developed a pressure sealed dependable alternative and has had some wells in place for more than 6 years without appreciable wear. A side by side comparison of durability is pictured on the right.



**JMS  
Coal  
Pulverizing  
Design**

**Typical  
Design w/  
Stellite  
Coating**

**Typical  
Design  
Uncoated  
Steel**

#1	DESCRIPTION
5V	Coal pulverizing thermowell - Add a W here for a brass plug and stainless steel chain attached to well (Example: 5VW)
#2	U (INSERTION) DEPTH
__"	Length in inches (see illustration below)
#3	PROCESS CONNECTION
A	3/4" NPT (Standard)
B	1" NPT
C	1-1/4" NPT
X	Other, specify
#4	LAG LENGTH (T)
T __"	Standard (See chart on page 5-1, option #6)
Z	N/A
X	Other, specify

**Note:** Immersion length of matching spring loaded sensor is per table on 5-1, selection 6, and YES, you can spring load your sensor!

5V    3    A    Z

