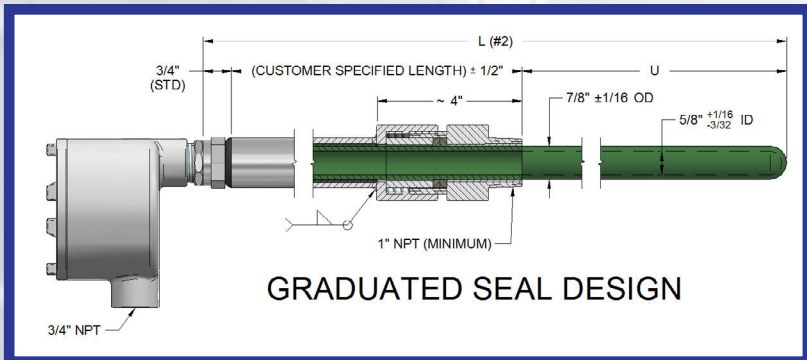
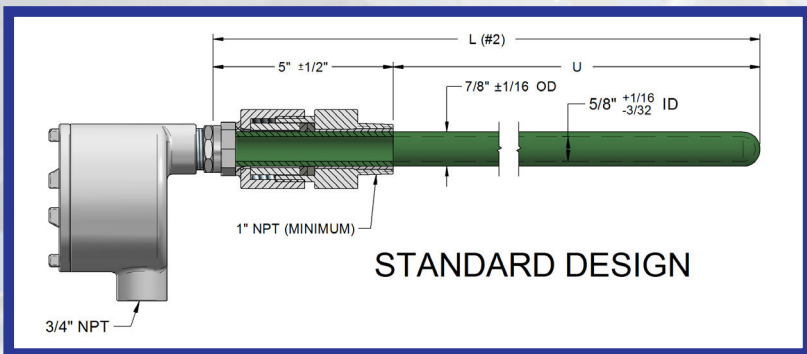


SULFUR PROTECTION TUBE



DESIGN ASPECTS

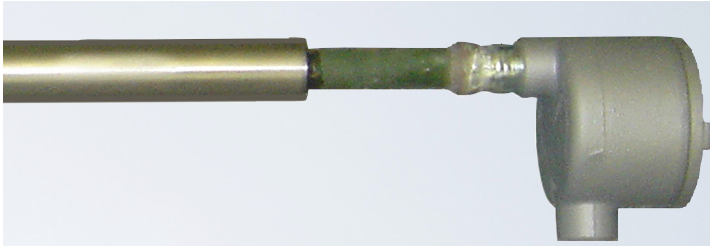


See page 5-8 (5G) for ordering.

- ❖ Excellent corrosion resistance capable of resisting even the punishing temperatures and corrosion of a sulfur burner.
- ❖ Dual graduated seals allow the end user to access and monitor the sensor, while preventing leakage of sulfur burner contents.
- ❖ Maximized lifespan of wells and sensors.

- ❖ Tightly bonded layer of Chromium Oxide which, together with the naturally inert nature of Alumina, provides protection tubing with a remarkable resistance to oxidizing and corrosive atmospheres over 2200°F.
- ❖ High thermal conductivity and sensitivity to temperature changes makes it an excellent choice for thermocouples used to monitor or control high temperature environments.
- ❖ Great strength at temperatures where many high temperature metals melt. Above 2800°F it begins to soften and becomes plastic.
- ❖ Less porous than most compacts. No significant passage of gas through the body at high temperatures, except under high vacuum. Sufficiently impermeable for most industrial applications.
- ❖ Superior to "straight ceramics" in resisting thermal and mechanical shock.
- ❖ Sturdy UL, FM and CSA approved explosion proof head.
- ❖ Not recommended in boiling sulfuric acid -- 10%. For more information regarding its suitability to your application, **Call JMS Today!!!**

SULFUR PROTECTION TUBE



See page 5-8 (5G) series for ordering.

PROCESS BENEFITS

- ❖ JMS provides experienced engineering capable of designing to suit your specification needs.
- ❖ Maximized lifespan of wells and sensors.
- ❖ Increases reliable temperature measurements in Sulfur burners and other sulfuric environment applications on an ongoing basis.
- ❖ Reduces risk of Sulfuric acid leaking into uncontained areas.
- ❖ Reduces shut downs due to sensor replacement.
- ❖ Avoids the high cost of repetitive replacements.

APPLICATIONS

Sulfuric acid plants



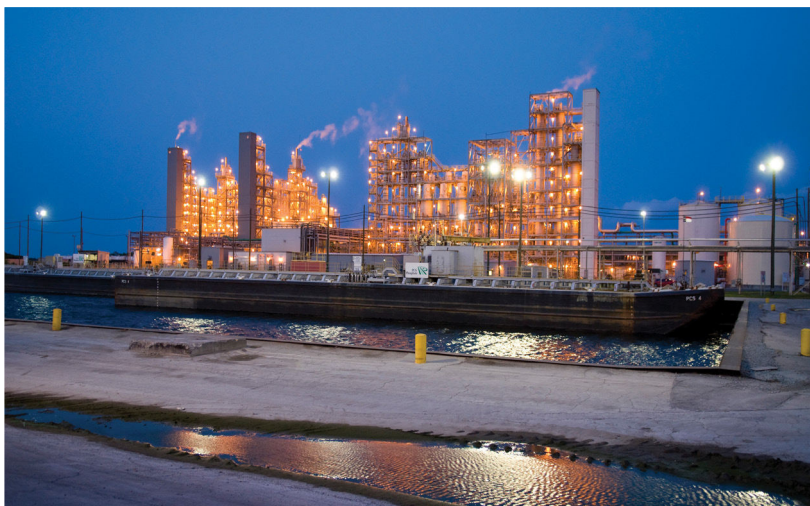
Corrosive SO_2 and SO_3 gas to 2500°F at tip

Corrosive SO_3 and HF gas to 2000°F

Boiling H_2SO_4 – 97%

Many additional applications.

Call JMS today for prompt and friendly assistance with your specification needs.



Published with permission. PCS Phosphate - NC.